

# Maneurop MT51HK4AVE (x2) condensing unit

## Specifications

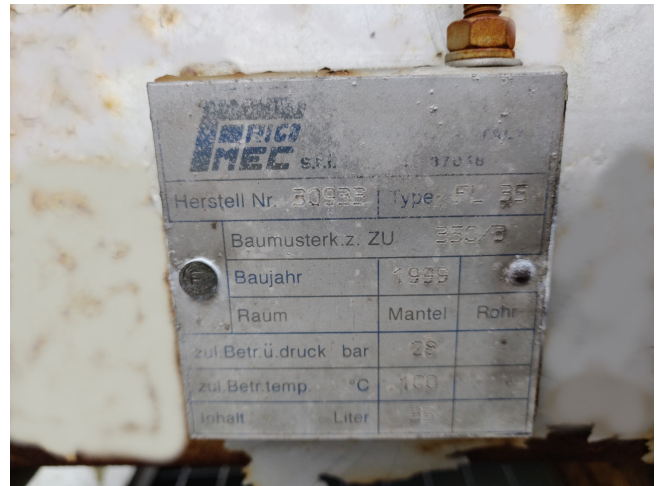
Marka	Maneurop
Typ	MT51HK4AVE (x2) condensing unit
Czynnik chłodzący	Freon
kW at +10°C/+40°C	32.32
kW at 0°C/+40°C	21.24
kW at -5°C/+40°C	16.76
kW at -10°C/+40°C	12.90
kW at -20°C/+40°C	6.90
Podstawa na stalowej ramie	✓
Ciśnieniowe przełączniki bezpieczeństwa	✓
Obiornik cieczy	✓
Obiornik cieczy ltr.	35
Osuszający filter lini cieczy	✓
Uwagi	Our capacity table is based on Manufacturer spec. We would like to know which refrigerant is in your system
Condensing Unit	✓
Stock	1



## Description

### Used Maneurop MT51HK4AVE (x2) condensing unit

Used condensing unit, Brand/Type 2 pieces Maneurop MT51HK4AVE scroll compressors, consisting the following elements: liquid receiver // Liquid line filter drier // safety pressure switches etc.. (see pictures) \*Why choose for HOSBV? Were not only the largest used refrigeration specialist in Europe, but also, we deliver all equipment including an extensive test, warranty and industrial cleaning. Optional we can arrange shipment and export documents.



### Cooling capacity [W]

t <sub>c</sub> \ t <sub>e</sub>	-25	-20	-15	-10	-5	0	5	10	15
30	2 978	4 246	5 785	7 619	9 777	12 284	15 167	18 453	22 170
35	2 649	3 850	5 306	7 042	9 085	11 462	14 199	17 324	20 863
40	2 327	3 456	4 824	6 457	8 381	10 623	13 210	16 168	19 525
45	2 018	3 071	4 347	5 871	7 672	9 774	12 206	14 994	18 164
50	-	2 702	3 881	5 293	6 965	8 924	11 196	13 808	16 787
55	-	-	3 435	4 730	6 269	8 079	10 187	12 619	15 402
60	-	-	-	4 188	5 590	7 247	9 185	11 433	14 015
65	-	-	-	-	4 935	6 434	8 199	10 257	12 635

### Power input [W]

t <sub>c</sub> \ t <sub>e</sub>	-25	-20	-15	-10	-5	0	5	10	15
30	1 873	2 115	2 319	2 489	2 629	2 744	2 838	2 915	2 981
35	1 920	2 204	2 446	2 652	2 825	2 970	3 091	3 192	3 279
40	1 940	2 272	2 558	2 805	3 016	3 196	3 349	3 480	3 593
45	1 930	2 313	2 649	2 943	3 197	3 417	3 608	3 773	3 918
50	-	2 323	2 714	3 059	3 362	3 628	3 861	4 066	4 247
55	-	-	2 747	3 148	3 506	3 823	4 104	4 354	4 577
60	-	-	-	3 206	3 622	3 995	4 330	4 630	4 900
65	-	-	-	-	3 706	4 141	4 534	4 889	5 212

### Current [A]